



Fixing type

Hexagonally countersunk bore for fixing with bolts from above.

Material

Nylon

Standard handle colour

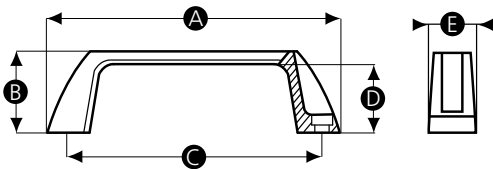
Black

Finish

Matt

Thread

Hexagonally countersunk moulded bore



Part No.	A	B	C	D	E	Bore size (mm)
12559Q	140	40	120	33	28	6.5
12560X	170	48	150	40	28	6.5