



Fixing type

Plain bores for fixing with bolts from above.

Material

Powder coated aluminium

Standard handle colour

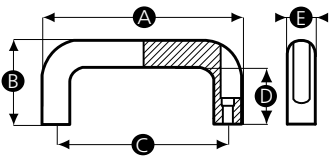
Black

Finish

Matt

Thread

Machined bore



Part No.	A	B	C	D	E	Bore size (mm)
11809Y	130	53	116	33	26	6.4
11810U	146	55	132	38	26	6.4
11811Q	178	57	164	38	26	6.4
11812X	210	57	196	38	26	6.4