

**Material**

High impact resistant thermoplastic

**Standard colour**

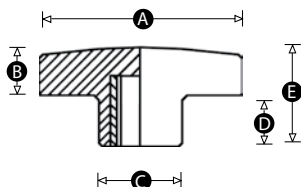
Black

**Finish**

Matt

**Female insert material**

Brass, zinc plated steel or stainless steel



Part No.	A	B	C	D	E	Thread size	Insert material
9141P	38	11	16	12	23	M6	Brass
14337Z	38	11	16	12	23	M8	Zinc plated steel
9139X	50	12	20	15	27	M6	Brass
9138Q	50	12	20	15	27	M8	Brass
14338V	50	11	20	15	26	M8	Zinc plated steel
14349V	50	11	20	15	26	M8	Stainless steel
14350R	50	11	20	15	26	M10	Stainless steel
9136Y	60	14	24	15	29	M8	Brass
9135R	60	14	24	15	29	M10	Brass
14340Y	60	14	24	15	29	M10	Zinc plated steel
9134V	60	14	24	15	29	M12	Brass
14341U	60	14	24	15	29	M12	Steel
14351Y	60	14	24	15	29	M12	Stainless steel