



Fixing type

Machined threads for fixing with screws from below.

Material

Matt anodised aluminium

Standard colour

Black

Finish

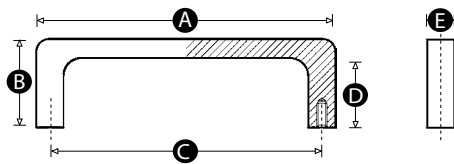
Anodised

Includes

This product comes complete with screws and washers.

Thread

Machined threads



Part No.	A	B	C	D	E	Thread size
5418X	67	40	55	32	12	M5
5420V	100	40	88	32	12	M5
5421Y	132	40	120	32	12	M5
5422Q	192	40	180	32	12	M5
5423T	247	40	235	32	12	M5