



Fixing type

Machined threads for fixing with screws from below.

Material

Matt anodised aluminium

Standard colour

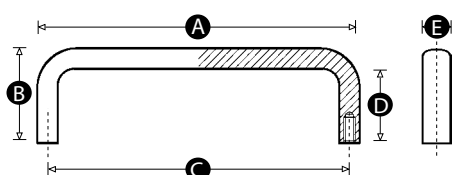
Black or silver

Finish

Anodised

Thread

Machined threads



Part No.	A	B	C	D	E	Thread size	Colour
5424W	63	40	55	32	12	M5	Black
5425P	63	40	55	32	12	M5	Silver
5426R	96	40	88	32	12	M5	Black
5427U	96	40	88	32	12	M5	Silver
5428X	108	40	100	32	12	M5	Black
5429P	108	40	100	32	12	M5	Silver
5430V	128	40	120	32	12	M5	Black
5431Y	128	40	120	32	12	M5	Silver
5432Q	188	40	180	32	12	M5	Black
5433T	188	40	180	32	12	M5	Silver
5434W	243	40	235	32	12	M5	Black
5435P	243	40	235	32	12	M5	Silver